

# AIRTIGHT® FIRETIGHT



- ✓ Has an extremely high fire resistance (up to 3+ hours)
- ✓ Can be accurately dimensioned in advance and can be inspected afterwards
- ✓ Quick and easy installation
- ✓ Contributes to the facade insulation
- ✓ Follows movements of expansion, shrinkage or wind load of the façade
- ✓ Weatherproof and can be placed during the structural work
- ✓ Sustainable and recyclable



## FIRETIGHT

Patented Firetight® consists of a vacuumed strip of mineral wool packed in a PE-foil with a vapour barrier film to which strips of intumescent band have been added and is available in various sizes. After installation, the wool expands and Firetight® will fill completely the entire space. The realized connection, is thermally insulated, airtight and fire resistant.

Firetight is a specially developed solution for the airtight sealing of cavities in buildings, where the cavity is also directly fire retardant.

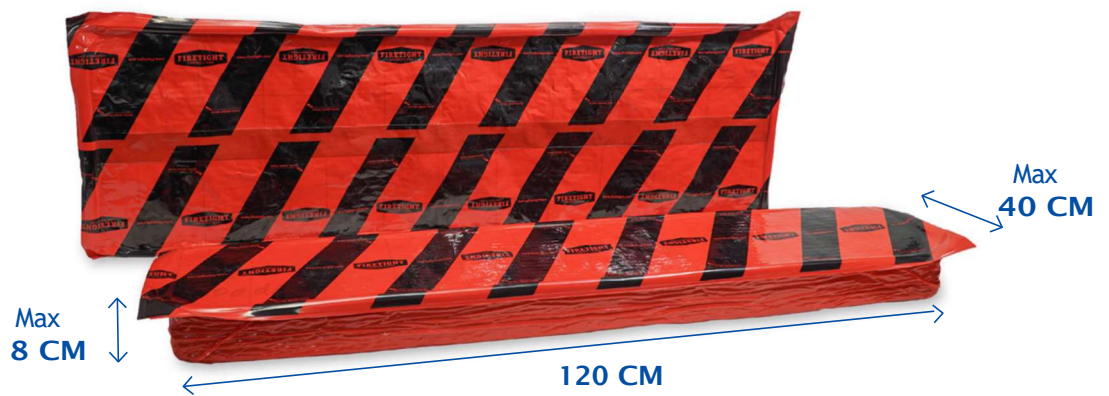


## PRODUCT

With Firetight®, spaces in buildings can be closed off fire retardantly, so that a potential fire cannot simply spread to adjacent areas. The Firetight® can be used anywhere in a building, where the cavity between floors, walls and facades must be able to withstand a fierce and expanding fire for a longer period of time. Firetight® prevents fire spread between different floors in tall buildings, such as residential towers, hospitals, offices, etc.

### General properties

The base of mineral wool falls into the highest fire class (A1). For an airtight seal class 4, 'passive building', the mineral wool must be sufficiently thick to be able to seal the gap complete. The Firetight® is produced in sufficient excess for this. In addition, the Firetight® comes with an additional strip intumescent band and is fire resistant for at least 3 hours.



## DIMENSIONS

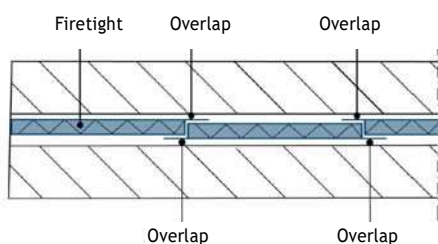
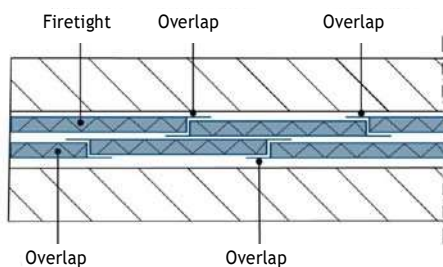
The Firetight® is available in the following sizes:

Size	Cavity gap	Cavity gap	Cavity gap	Cavity gap	Unit
1200 x 250 mm	35 a 40 mm	40 a 55 mm	55 a 65 mm	70 a 80 mm	m1
1200 x 300 mm	35 a 40 mm	40 a 55 mm	55 a 65 mm	70 a 80 mm	m1
1200 x 400 mm	35 a 40 mm	40 a 55 mm	55 a 65 mm	70 a 80 mm	m1

## ASSEMBLY



Note: do not cut the foil over great lengths.



## METHOD OF ASSEMBLY

- ✓ Place the Firetight® (vacuumed strip of mineral wool packed in a PE-foil with a vapour barrier) in the cavity.
- ✓ In the case of channel plate floors, the Airtight® must be at least 50 mm above and below the walls for the benefit of impact sound insulation and airtightness.
- ✓ Place a second Firetight® tightly against the first Firetight®. Use the foil overlap of the Firetight® to ensure a good airtightness at the connection.
- ✓ Prick the placed Firetight® with a pointed object to make them expand. In addition, the Firetight® must to be punctured on the side or underside, so that drainage is impossible.

## OUR POSSIBILITIES

- ✓ Cut to size of glass wool, stone wool, pir, pur, xps, eps, resol foam, melamine foam, foam glass;
- ✓ Milling of glass wool, stone wool, pir, pur, xps, eps, resol foam, melamine foam, foam glass;
- ✓ Bond insulation to glass cloth, glass fleece, or other upholstery;
- ✓ Bond insulation to wood, plaster, or other sheet material;
- ✓ Seal insulation in black or white PE-foil;
- ✓ Seal insulation in vapour barrier film;
- ✓ Tailor-made delivery of vacuum insulation.

## OUR MACHINERY

- ✓ CNC machines
- ✓ 3D milling machines
- ✓ Milling machines
- ✓ Band saws
- ✓ Cleaf bench
- ✓ Sanding machines
- ✓ Vacuum machines
- ✓ Gluing paths
- ✓ Circular saws

## WE ARE STRONG IN

- ✓ The tailor-made delivery of any type of insulation;
- ✓ Packaging separately for phase or for floor is no problem;
- ✓ All deliveries are clearly labeled, so that all items can be easily found on the construction site or in the factory;
- ✓ Together with the customer, we look for the best and cheapest solutions;
- ✓ Time deliveries and/or a truck with unloading options is possible;
- ✓ We have more than 30 years of experience in insulation.



Alert Isolatie B.V.  
's-Gravelandseweg 246  
3125 BK Schiedam  
The Netherlands

Tel.: 010 - 302 0200  
verkoop@alertisolatie.nl  
www.alertisolatie.nl